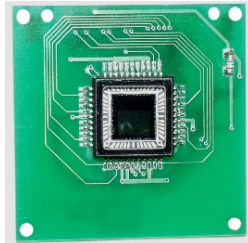
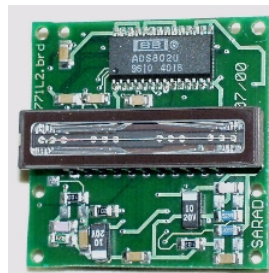


## Modular camera system SPCxxx



VGA sensor

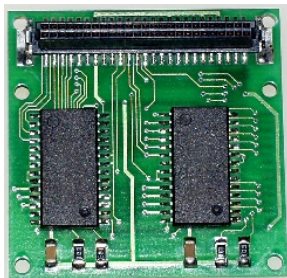


line sensor 2048 x 14µm

The adaptation of the Sensors to the system bus takes over a FPGA.

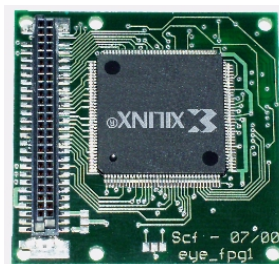


sensor adaptation



FIFO 1MB x 8

By small systems are the data directly piped to the interface - or it takes place in a 1MB-FIFO.

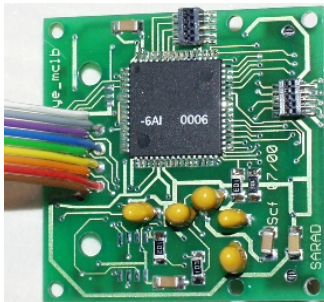


FPGA unit

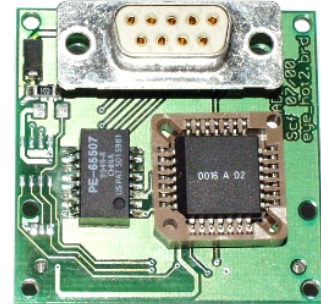


DSP 'C50

The preprocessing of the picture data can successes on a further FPGA or with a DSP. This units are via buffer memorys cascadable.



For applications in control systems the output of the data uses RS232 or RS485.



HOTLINK

Interface RS232 / RS485

The transfer of large data quantities takes place with HOTLINK, which in the optical variation can bridge distances up to 40 km.



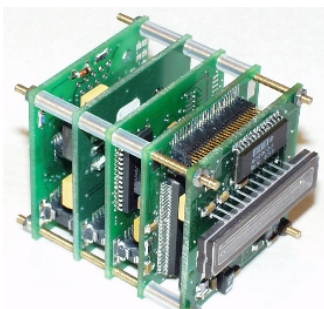
Prescaler 10..60V



power unit 5V-3,3V-2,4V

The power supply takes place with the help of an three channel power module from nominal 12V-DC. With additional modulus the voltage range become extended up 10V to 60V.

The sum of the units results in a mechanical stable modulus block ...



... which placed in a aluminium housing.